



# London Underwriters

## Getting Started

### Welcome!

We've prepared some materials to help you get started with London Underwriters

#### Quick Links

Below is some important information for you to get started:

-  Our Website, live chat available: [www.londonuw.com](http://www.londonuw.com)
-  For Underwriting submissions: [newbusiness@londonuw.com](mailto:newbusiness@londonuw.com)
-  Register for a Webinar [Click Here](#)
-  View Your Agency Resources [Here](#)

Access Our Portal 

## Content

About Us	03
Commercial Lines	04
Personal Lines	05
Our InsurTech Programs	06
Appetite Guides	07
Our Brokerage Markets	09
Admin Items	10
Contact Us	11



***LU One:  
The New Feature That  
Will Enhance Your  
Digital Experience 🚀***

**LU ONE** 

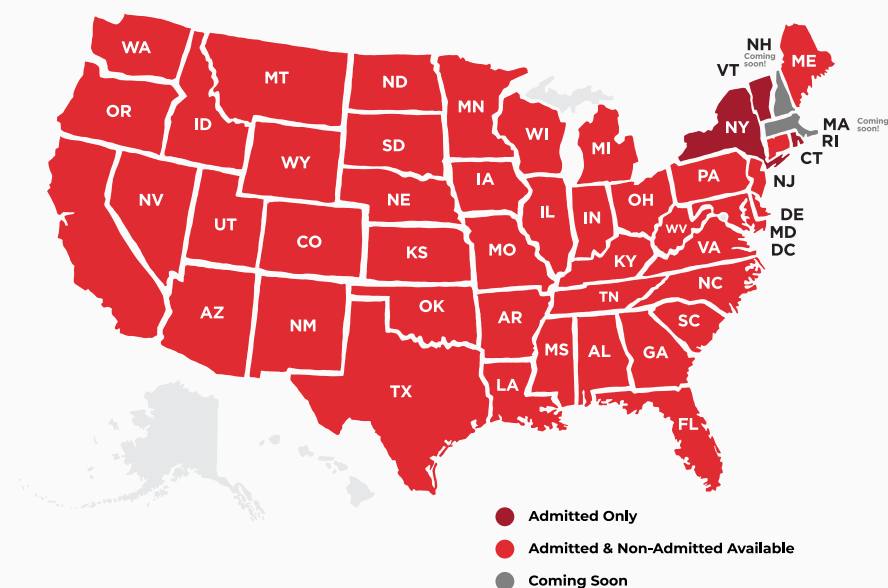
*Say hello to effortless access and  
goodbye to password fatigue!*



London Underwriters is an insurance wholesale broker that specializes in writing admitted and non-admitted business for independent retail agencies in almost all 50 states. Our appointed agents have access to several InsurTech online raters that provide the ability to quote and bind directly online for over 95% of all ISO class codes.

We also have over 100+ additional markets that our Underwriting team has access to, which gives us the ability to provide our appointed agents competitive quotes for all of their P&C underwriting needs.

Licensed in over **45 states**



## Commercial Lines Overview

### Lines of Business

#### Property

- Business Owners Policy
- Monoline Wind
- Builders Renovation
- Ground Up Construction
- Vacant Land/Property
- Flood

#### Marine

- Stock Throughput
- Inland Marine
- Contractor's Equipment

#### Casualty

- Professional Liability
- General Liability
- Workers' Compensation
- Cyber Liability
- Liquor Liability
- Special Events
- Excess Liability
- Terrorism & Active Shooter
- & more!

### ★ Target Classes

- Artisan Contractors
- Cargo
- Janitorial
- Retail
- Processing & Servicing
- Financial
- Health, Beauty, Fitness
- Landscaping
- Real Estate
- Restaurants
- & More!



If there's an industry that's not listed here, don't worry, just send over the ACORD forms or any supporting document to [newbusiness@londonuw.com](mailto:newbusiness@londonuw.com) so our underwriting team can take a look at it.



## Personal Lines Overview

### Lines of Business

#### Property

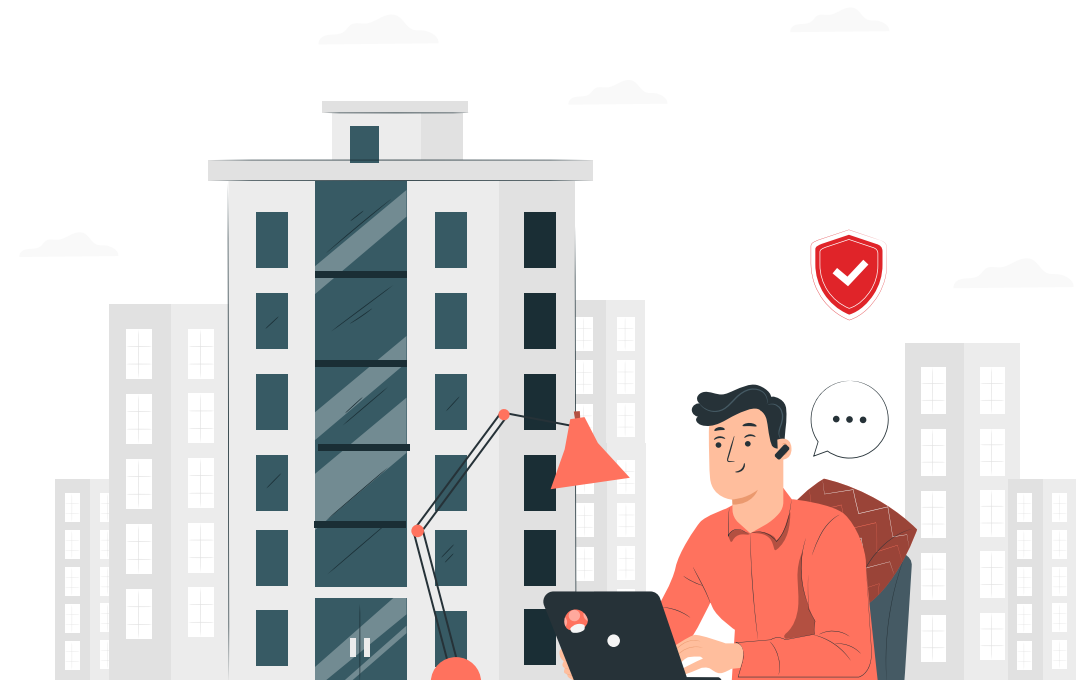
- Builders Renovation
- Ground Up Construction
- Vacant Land/Property
- Flood

#### Boats & Yachts

#### Personal Articles Floater



We **do not** have any  
homeowners markets



# InsurTech Programs



> Quote & bind directly online on these admitted and non-admitted platforms



## Slice

- General Liability
- E&S Contractors GL
- Workers' Compensation

## Foxquilt

- General Liability

## First Insurance

- General Liability

## Hiscox NOW

- General Liability
- Professional Liability
- Business Owners Policy
- Cyber Liability

## biBERK

- Workers' Compensation
- Business Owners Policy
- General Liability
- Professional Liability
- Umbrella

## Coterie

- Business Owners Policy
- General Liability
- Professional Liability

## USLI

- Commercial Property + Casualty
- Hospitality & Liquor
- Professional
- Non-Profits
- Special Events

## Draftrs

- Professional Liability

## THREE Insurance

- Commercial Property
- General Liability
- Professional Liability
- Workers' Compensation
- Cyber Liability

## Neptune

- Private Residential Flood
- Private Commercial Flood
- Parametric Earthquake

## Dual

- Private Residential Flood
- Private Commercial Flood

## iBynd

- Workers' Compensation
- Cyber Liability

## Pie Insurance

- Workers' Compensation

## Next Insurance

- General Liability
  - Excess Liability
  - Liquor Liability
  - Contractors Equipment
- Professional Liability
- Commercial Property

## Attune

- Business Owners Policy
- Excess Liability

# Appetite Guides

**Slice**

[View Appetite](#)

**Hiscox NOW**

[View Appetite](#)

**biBERK**

[View Appetite](#)

**Coterie**

[View Appetite](#)

**Next Insurance**

[View Appetite](#)

**USLI**

[View Appetite](#)

**Attune**

[View Appetite](#)

**Neptune**

[View Appetite](#)

**Dual**

[View Appetite](#)

**Pie Insurance**

[View Appetite](#)

**First Insurance**

[View Appetite](#)

**Foxquilt**

[View Appetite](#)

**THREE Insurance**

[View Appetite](#)

**Drafts**

[View Appetite](#)



# Excess & Surplus Online Programs

> Submit your risks to our Underwriting team



- Vacant Land
- Builders Risk
- Ground Up Construction
- Small Commercial Packages
  - Professional Liability
  - Special Events



- Commercial Property
- Commercial Wind

**Keep in mind that AU Gold & True Premium you will not be able to bind coverage online.**



# Brokerage Markets

> List of markets that we work with:



- Ace/Westchester
- Arch
- Ascent James
- Avondale
- Bankers
- Beazley
- Catalytic
- Century Surety Company
- CFC Underwriting
- CNA Insurance
- Chubb International
- Crum & Forster
- Embroker
- Employers
- Great American Insurance
- Hiscox
- Ironshore
- Kinsale
- Liberty Mutual Insurance
- Lloyd's of London
- Markel
- Navigators
- Normandy
- River
- Starstone

# Admin Items



## Accounting Process

### > Direct Bill

All Direct bill commission will be direct deposited into the bank account that you provided us during the appointment process.

Payments are made within the first week of every month.

Typically turn around time for our direct bill commissions is between 30-60 days, depending on the carrier and when the policy was bound.



**Pro Tip:** You can download your commission statements from our website!

### > Agency Bill

Invoices are sent to the agent that bound the policy and are due upon receipt.

You can make payment through our website NET of commission.

### Payment Options



**Credit Card**  
(3.5% processing fee)



**Checking & Savings**



**Via Zelle**

## Claims Process

### 1 Claims submitted **directly to InsurTech Program:**

- Hiscox Now
- Next Insurance
- Coterie
- Attune
- Neptune Flood
- USLI
- Pie Insurance
- biBERK
- Slice
- Fist Insurance
- Foxquilt
- Drafts
- THREE

### 2 Claims submitted **to London Underwriters:**

- ALL other markets: [www.londonuw.com/file-a-claim](http://www.londonuw.com/file-a-claim)

# Contact Us



## **Marketing > [marketing@londonuw.com](mailto:marketing@londonuw.com)**

Email the Marketing team for your general questions about our appetite, InsurTech programs, training for your team and more! Business Development (866) 245-5197 Ext. 4



## **Submissions > [newbusiness@londonuw.com](mailto:newbusiness@londonuw.com)**

Email your ACORD forms or applications to [newbusiness@londonuw.com](mailto:newbusiness@londonuw.com). We will have one of our Underwriters reach out to you about your submission. Underwriting (866) 245-5197 Ext. 5



## **Endorsements > [endorsements@londonuw.com](mailto:endorsements@londonuw.com)**

Email your request to [endorsements@londonuw.com](mailto:endorsements@londonuw.com). Endorsements (866) 245-5197 Ext. 5



## **Accounting > [accounting@londonuw.com](mailto:accounting@londonuw.com)**

Our accounting team is here to assist you. Email [accounting@londonuw.com](mailto:accounting@londonuw.com) if you have any questions about a payments, commissions and more! Accounting (866) 245-5197 Ext. 6



## **Claims > [claims@londonuw.com](mailto:claims@londonuw.com)**

Our claims team is here to assist you. Email [claims@londonuw.com](mailto:claims@londonuw.com) if you need to file a new claim or request loss runs. You can file a claim here. Claims (786) 206-9841



## **General Questions & Inquiries > [customercare@londonuw.com](mailto:customercare@londonuw.com)**

Not sure where to direct your questions or inquiries? Email [customercare@londonuw.com](mailto:customercare@londonuw.com) and we will route your inquiry accordingly.





**Live Chat Available**

**[www.londonuw.com](http://www.londonuw.com)**

*From 8:00 a.m. to 6:00 p.m. EST*

